



DIMAR MANUFACTURING

***“Advanced Technology and Skilled
Tradesmen crafting effective metal
fabricating solutions”***

DIMAR



**PLANT #1
CLARENCE NY**



**PLANT #2
CHEEKTOWAGA NY**

DIMAR - RANGE OF PRODUCTS



PRODUCT RANGE: *Small thin gauge metal forms through 1" thick laser cut plates; up to large heavy gauge fabrications.*

DIMAR

DIMAR SNAP SHOT

- **\$15,000,000 Sales**
- **(2) Plants in Western N. Y. State – 90,000 square feet**
- **110 employees: including fully staffed departments for Engineering/Design; Purchasing/Expediting; and Quality; all with Lead Managers**
- **Quality products made in accord with the principles of ISO 9001-2008**
- **Solid commitment to customer delivery requirements**



DIMAR SNAP SHOT

Product Range

- *Fabrications from steel, stainless steel, aluminum, bronze, copper, plastics, and other materials*
 - *Thicknesses supported: from .006” thick through over 1.00” thick – cut, formed, welded, and finished including powder coating and wet spray painting.*
 - *Weight and Size – from (20) pieces per pound up to single fabrications weighing up to 20,000 pounds each*
- *Comprehensive Range of Capabilities – One Point of Contact*

INDUSTRIES SERVED

- **Aerospace**
- **Amusement – Ticket Redemption**
- **Consumer Products**
- **Industrial Air Flow**
- **Industrial Products**
- **Electronics**
- **Medical Equipment**
- **Office Technology**
- **Safety**
- **Solar Technology**
- **Transportation**



ENGINEERING



- Engineers/Designers
- Prototype Development
- SolidWorks 2013
- AutoCad 2000
- Striker Design/Punching/Nesting Software

Dimar's Engineering team offers ongoing design assistance for all your manufacturing needs. Dimar clients have benefited from product re-designs that both reduce cost and shorten manufacturing cycles.



DIMAR

QUALITY



- QMS ISO 9001:2008
- DIMAR is an extension of our customers
- First Pc to Final Inspection (Cpk, PPAPs, MTRs, Control Plans, Checklists, etc...)
- M&IT Equipment (Go/No Go Gauges)
- CAPA / Audit systems
- Continuous Improvement: Six Sigma Methodology

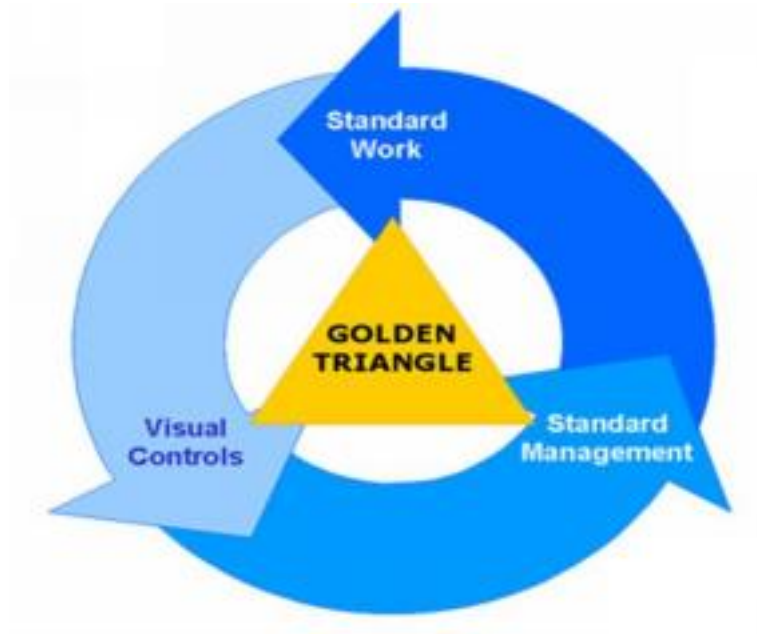
QUALITY



Specialty Inspection / Testing

- Dye Penetrant Testing
- Ultrasonic Weld Test
- Hydro Testing
- Mag Particle Testing
- Testing – in Plant
 - Final Assemblies
 - Rotors

QUALITY



Quality for All

- Orientation and Training
- Collaborative Work Environment
- Safety / Quality Incentive Program

LASER CUTTING



**STEEL
STAINLESS
ALUMINUM
OTHER MATERIALS**

- (2) Mitsubishi
4000/4500 Watt Lasers**
- **Full Auto
Load/Unload**
 - **24/7 Lights Out**
 - **Large Sheet Capacity**
 - **Cuts .006" to 1.000"**

LASER CUTTING



OTHER CUTTING CAPABILITIES



TURRET PUNCHING

Amada Vipros 358
King – (58) Stations;
33 Tons – up to .250”
Thick; In-press
countersinking; 3-D
forming (louvers,
etc.)

SHEARING

12’ Shear up to .375”
Thick

PLASMA CUTTING

PRESS BRAKE FORMING



- (10) Press Brakes up to 240 Tons and 14' length including:
 - (7) late model CNC Press Brakes
 - (1) Robotic Press Brake



MACHINING

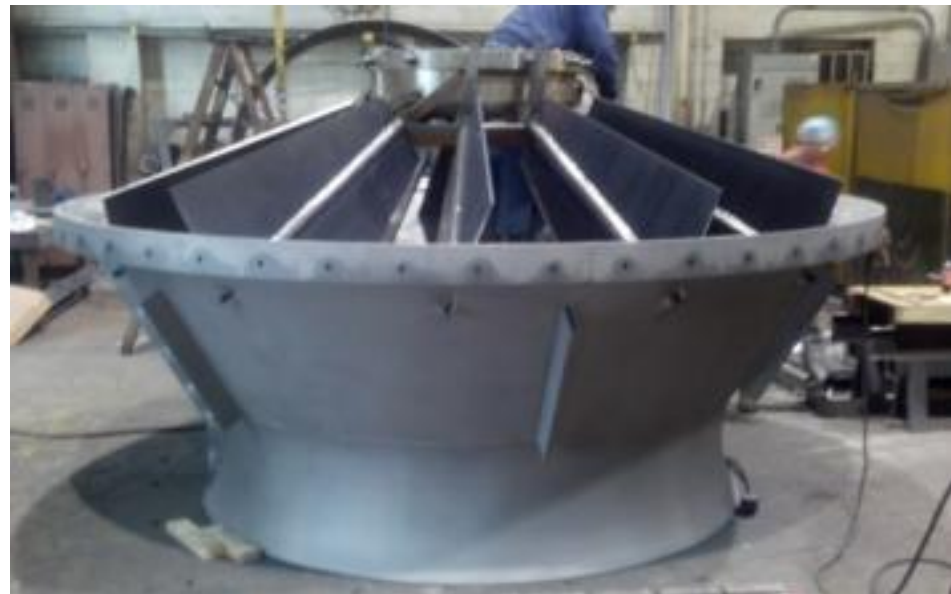


DIMAR has a full range of equipment to handle all of your machining requirements.

- **Production Machining**
- **Secondary Operation Machining**
- **Large Fabrication Machining**
- **Bore, Keyway, and Drilling – Up to 35”**

WELDING

- **STEEL, STAINLESS STEEL, ALUMINUM**
 - MIG
 - TIG
 - RESISTANCE SPOT WELDING
 - BRAZING
 - CERTIFIED to AWS, ASME Section IX



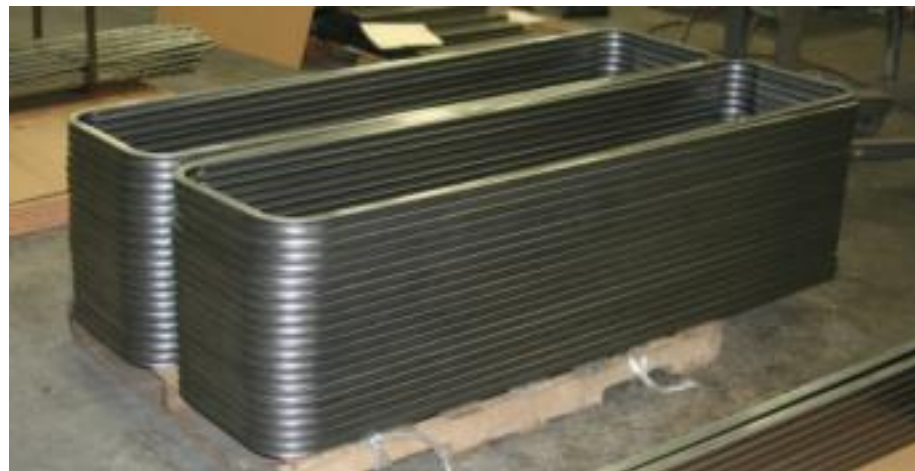
WELDING



TUBE CUTTING & FORMING



- Hem Saw Automatic CNC Tubular Band Saw
- RMD Tube Bender with Indexing
- ERCOLINA Top Hydraulic Tube Bender



DIMAR

TUBE CUTTING & FORMING



POWDER COAT FINISHING



- (1)750 Foot Closed Loop Conveyorized Paint System
- Euro Tech Mini Cyclone Automated Powder Coating System
- Three Stage Stainless Steel Wash System with Pre-heated Iron Phosphate chemical bath
- 2' X 5' X 10' Profile Capacity
- Plus Batch Loading Capacity – 70" X 80" Opening
- Gas Fired 45' X 25' Oven



POWDER COAT FINISHING



WET SPRAY PAINTING



– Finishing to your Specifications



SPECIAL PROGRAMS



- Kits - Components fabricated and “kitted” on returnable carts
- KanBan
 - Min/Max Stocking Levels
- Blanket PO’s
 - Releases as needed

CAPABILITIES – Plant 2



- Balancing Up to 96" and 10,000# Max
- Shaft Turning
 - Straight with keyways:
3 15/16ths Dia X any length
 - Turndown Shafts: 15/16ths Dia X 50" Long
 - Taper Shafts: 5.0" Max Dia X 50" Long
- Bar and Plate Rolling

PRODUCT SAMPLES – PLANT 2

Dimar Plant 2 builds a variety of Custom Fabrications including:



PRODUCT SAMPLES – PLANT 2



PRODUCT SAMPLES – PLANT 2



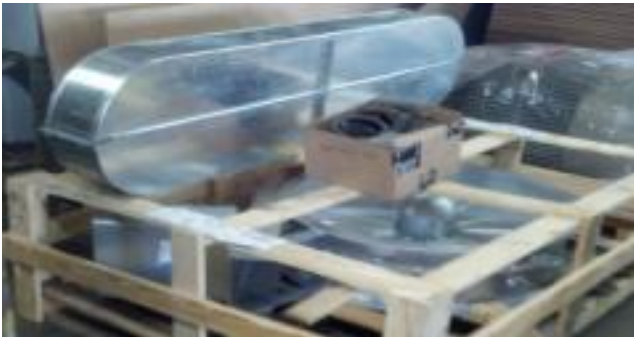
PRODUCT SAMPLES – PLANT 2



PRODUCT SAMPLES – PLANT 2



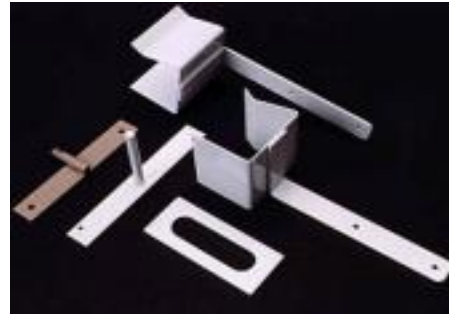
- Safety Screens
- Beltguards
- Shaftguards
- Shaft Seal Assemblies



OTHER PRODUCT SAMPLES – PLANT 2



PRODUCT SAMPLES – PLANT 1



- Thin Gauge Sheet Metal Fabrications
 - Components
 - Sub-Assemblies



PRODUCT SAMPLES - PLANT 1



- **Contract Manufacturing**
 - Assemblies; Sub-Assemblies, and Finished Products



THINK DIMAR !

- From This...



To This..
and
Everything in
Between..



DIMAR

What Dimar Can Do For You!

- **One Stop Shop – Broad Capabilities**
- **Unique Partnership of Skilled Craftsman and Advanced Technology**
- **Dedicated to Quality and Customer Service**
- **On Time Delivery Commitment**
- **Competitive Total Value**



“Advanced Technology and Skilled Tradesmen crafting effective metal fabricating solutions”